

Features

Specifications

Screwed Bonnet, Threaded BSP ends
 PN20
 10 Bar (150PSI) Steam
 20 Bar (300PSI) Water, Oil

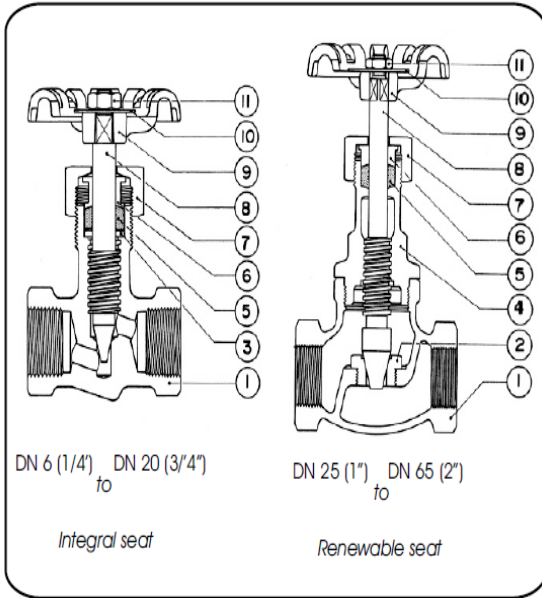


Fig. 003

Suitability

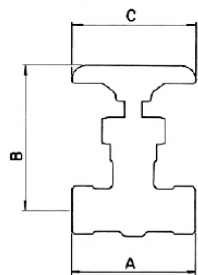
Water	Steam	Gas	Oil	Air
<input checked="" type="checkbox"/>	<input checked="" type="checkbox"/>	<input type="checkbox"/>	<input checked="" type="checkbox"/>	<input type="checkbox"/>

Material Combination



P/No.	Name of Part	Material	Specifications
1	Body	Bronze	B-62 Alloy C836
2	Seat Ring	Bronze	B-62 Alloy C836
3	Washer	Brass	B-16 Alloy C360
4	Bonnet	Bronze	B-62 Alloy C836
5	Packing	PTFE	-
6	Packing Gland	Brass	B-124 Alloy C377
7	Packing Nut	Bronze	B-62 Alloy C836
8	Stem	Brass	B-124 Alloy C377
9	Handwheel	Aluminium	B-85 S 12 A
10	Identification Plate	Aluminium	-
11	Handwheel Nut	Dichromated Steel	-

Dimensional Data



Sizes		Weight	Dimensions			
NPS*	DN**	Kg	A	B (O1)	C	D (2)
1/4	6	0,12	36	55	50	5
3/8	10	0,14	40	55	50	5
1/2	15	0,17	45	57	50	6
3/4	20	0,40	54	72	50	9,2
1	25	1,23	92	152	80	14
1 1/4	32	1,78	105	170	90	14
1 1/2	40	2,46	118	182	100	17
2	50	3,80	140	218	120	17

* NPS: Nominal Pipe Size
 ** DN: Diámetro Nominal

(1) Open
 (2) Seat Opening